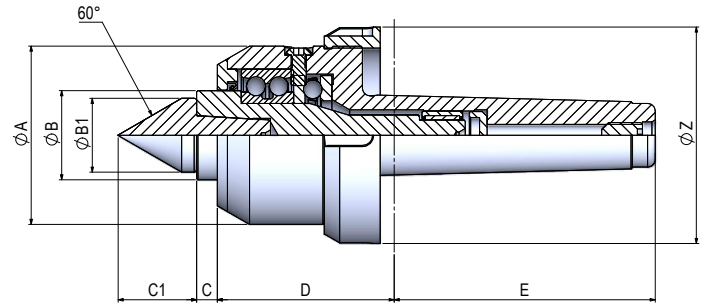


SERIE POWER FS

Contropunta ad alta precisione con ghiera di estrazione e cuspide intercambiabile
 High precision live center with ring nut and interchangeable point



CARATTERISTICHE GENERALI / Technical data

CONO MORSE / Morse Taper	PESO / Weight (kg)	CARICO / Load		ECCENTRICITA' / Eccentricity	MAX GIRI / 1' Max Rounds / 1' r.p.m.
		ASSIALE Axial (N)	RADIALE Radial (N)		
C.M.3	1,1	3040	970	0,008 / 0,010	4500
C.M.4	1,9	3730	1730	0,008 / 0,010	4000
C.M.5	3,9	5100	2530	0,008 / 0,010	2800

SERIE POWER FS / SERIES POWER FS

CONO MORSE / Morse Taper	DIMENSIONI / Dimensions (mm)							SERIE / Series	CODICE / Code
	ØA	ØB	C	C1	D	E	ØZ		
C.M.3	60	28	25	7	37	66	81	75	RPW003.000.03
C.M.4	70	35	29	8	41	69,5	102,5	82	RPW004.000.03
C.M.5	90	40	35	8	46	76,5	129,5	105	RPW005.000.03

SERIE POWER FS

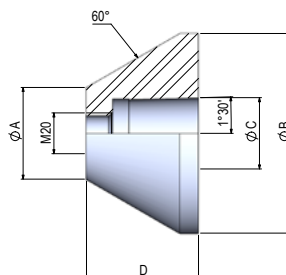
Contropunta ad alta precisione con ghiera di estrazione e cuspide intercambiabile
 High precision live center with ring nut and interchangeable point

RICAMBI E ACCESSORI/ Spare parts and extra items

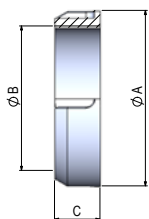
FLANGE PER CONTROPUNTA / Flange for live center

SERIE / Series	DIMENSIONI / Dimensions (mm)				CODICE / Code
	øA	øB	øC	D	
FPI/45/98	45	98	35	55	RPW000.001.05
FPI/95/148	95	148	35	55	RPW000.002.05
FPI/145/198	145	198	35	55	RPW000.003.05
FPI/195/248	195	248	35	55	RPW000.004.05
FPI/245/298	245	298	35	55	RPW000.005.05

øB a richiesta fino a ø1000 /
 øB on request till ø1000



GHIERA DI ESTRAZIONE PER SERIE POWER / SP-G / MA Ring nut for SERIES POWER / SP-G / MA



CONO MORSE / Morse Taper	DIMENSIONI / Dimensions (mm)			SERIE / Series	CODICE / Code
	øA	øB	C		
3	75	60x1,5	22	GHP 60	RPW003.005.00
4	82	70x1,5	22	GHP 70	RPW004.005.00
5	105	90x1,5	20	GHP 90	RPW005.005.00
6	140	110x1,5	23	GHP 110	RPW006.005.00

Grafico carico assiale POWER FS SERIES POWER FS assial graph

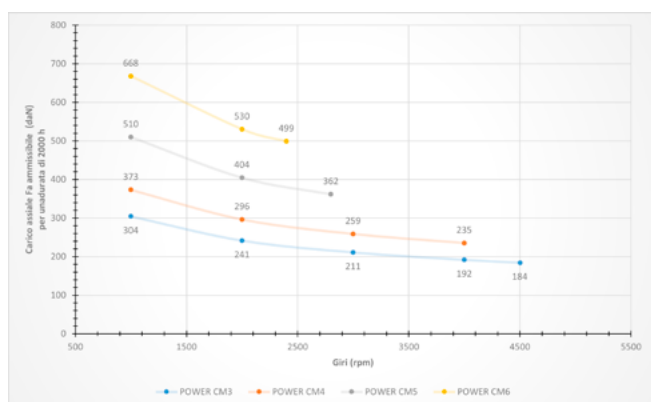
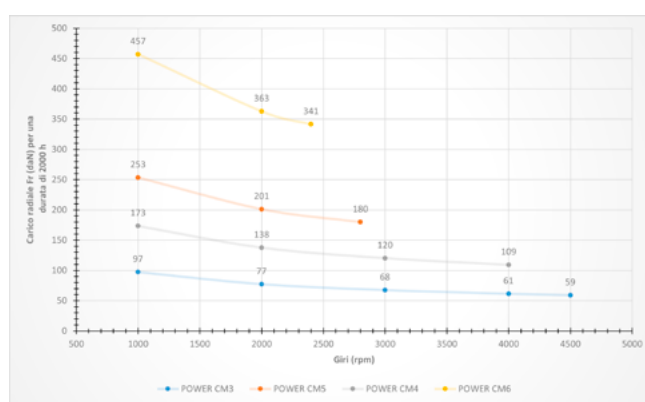


Grafico carico radiale POWER FS SERIES POWER FS radial graph



SERIE POWER FS

Contropunta ad alta precisione con ghiera di estrazione e cuspide intercambiabile
 High precision live center with ring nut and interchangeable point

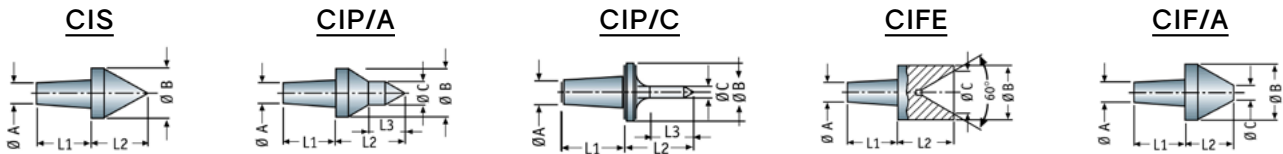
VALIGETTA / Case

CONO MORSE / Morse Taper	CUSPIDI in dotazione / Included points	SERIE / Series	CODICE / Code
C.M.3	CIS CIP/A	POWER-FS 3/5	RPWC03.000.05
C.M.4	CIP/C CIFE CIF/A	POWER-FS 4/5	RPWC04.000.05
C.M.5	CIF/A	POWER-FS 5/5	RPWC05.000.05



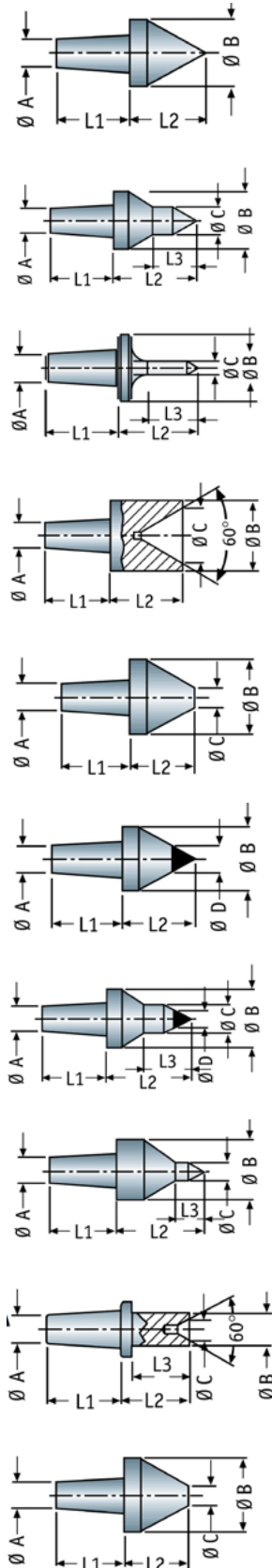
Cuspidi in dotazione VALIGETTA POWER FS / Interchangeable points included in SERIES POWER FS CASE

Dimensioni e specifiche tecniche per CUSPIDI a pag. 13 /
 Dimensions and technical data for POINTS at page n. 13



Specifiche tecniche cuspidi intercambiabili SERIE POWER FS /
Technical data interchangeable points for SERIES POWER FS

In dotazione nella valigetta / Included in the case



CONO MORSE / Morse taper	SERIE / Series	DIMENSIONI / Dimensions							CODICE / Code
		L1	L2	L3	ØA	ØB	ØC	ØD	
POWER FS C.M.3	CIS 3	27	28	-	10,4	25	-	-	RPW003.007.03
POWER FS C.M.4	CIS 4	29	31	-	12	29	-	-	RPW004.007.03
POWER FS C.M.5	CIS 5	30	36	-	17,2	35	-	-	RPW005.007.03
POWER FS C.M.3	CIP/A 3	27	34	16	10,4	25	12	-	RPW003.009.03
POWER FS C.M.4	CIP/A 4	29	37	16,5	12	29	12	-	RPW004.009.03
POWER FS C.M.5	CIP/A 5	30	42	19	17,2	35	15	-	RPW005.009.03
POWER FS C.M.3	CIP/C 3	27	30	19	10,4	25	5	-	RPW003.009.04
POWER FS C.M.4	CIP/C 4	29	30	19	12	29	5	-	RPW004.009.04
POWER FS C.M.5	CIP/C 5	29	30	19	17,2	29	5	-	RPW005.009.04
POWER FS C.M.3	CIFE 3	27	30	-	10,4	29	23	-	RPW003.012.03
POWER FS C.M.4	CIFE 4	29	30	-	12	29	23	-	RPW004.012.03
POWER FS C.M.5	CIFE 5	30	35	-	17,2	35	27	-	RPW005.012.03
POWER FS C.M.3	CIF/A 3	27	35	-	10,4	59	26	-	RPW003.013.03
POWER FS C.M.4	CIF/A 4	29	35	-	12	59	26	-	RPW004.013.03
POWER FS C.M.5	CIF/A 5	30	35	-	17,2	59	26	-	RPW005.013.03
POWER FS C.M.3	CIW 3	27	28	-	10,4	25	-	11	RPW003.008.03
POWER FS C.M.4	CIW 4	29	31	-	12	29	-	11	RPW004.008.03
POWER FS C.M.5	CIW 5	30	36	-	17,2	35	-	14	RPW005.008.03
POWER FS C.M.3	CIP/W 3	27	34	16	10,4	25	12	7	RPW003.010.03
POWER FS C.M.4	CIP/W 4	29	37	16,5	12	29	12	7	RPW004.010.03
POWER FS C.M.5	CIP/W 5	30	42	19	17,2	35	15	11	RPW005.010.03
POWER FS C.M.3	CIP/B 3	27	34	11	10,4	25	7	-	RPW003.011.03
POWER FS C.M.4	CIP/B 4	29	37	13	12	29	7	-	RPW004.011.03
POWER FS C.M.5	CIP/B 5	30	42	12	17,2	35	7	-	RPW005.011.03
POWER FS C.M.3	CIFE/A 3	27	25	21	10,4	12	8	-	RPW003.012.05
POWER FS C.M.4	CIFE/A 4	29	25	21	12	12	8	-	RPW004.012.05
POWER FS C.M.5	CIFE/A 5	30	25	21	17,2	12	8	-	RPW005.012.05
POWER FS C.M.3	CIF/B 3	27	35	-	10,4	78	46	-	RPW003.014.03
POWER FS C.M.4	CIF/B 4	29	35	-	12	78	46	-	RPW004.014.03
POWER FS C.M.5	CIF/B 5	30	35	-	17,2	78	46	-	RPW005.014.03