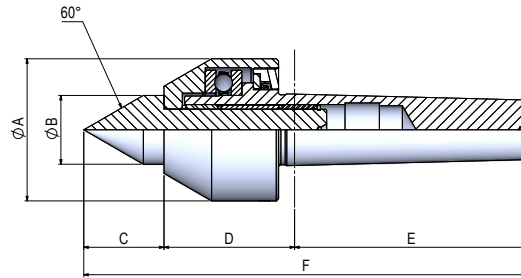


SERIE AM

Contropunta a bassa velocità senza ghiera di estrazione, cuspidi e calotta rotanti
 Low speed live center without ring nut, rotary point and body



CARATTERISTICHE GENERALI / Technical data

CONO MORSE / Morse Taper	PESO / Weight (kg)	CARICO / Load		ECCENTRICITA' / Eccentricity	MAX GIRI / 1' Max Rounds / 1' r.p.m.
		ASSIALE Axial (N)	RADIALE Radial (N)		
C.M.3	1,3	4380	790	0,008	4000
C.M.4	1,8	4040	880	0,008	3500
C.M.5	3,5	6330	1540	0,01	2500

SERIE AM con cuspidi standard / SERIES AM with standard point

CONO MORSE / Morse Taper	DIMENSIONI / Dimensions (mm)						SERIE / Series	CODICE / Code
	ØA	ØB	C	D	E	F		
C.M.3	56	24	28	57	81	166	AM 3	RAM003.000.01
C.M.4	62	30	35	56,5	102,5	194	AM 4	RAM004.000.01
C.M.5	79	38	45	65,5	129,5	240	AM 5	RAM005.000.01

SERIE AM

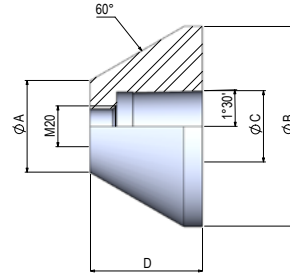
Contropunta a bassa velocità senza ghiera di estrazione, cuspidi e calotta rotanti
 Low speed live center without ring nut, rotary point and body

RICAMBI E ACCESSORI/ Spare parts and extra items

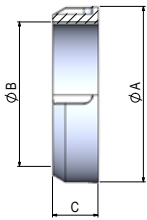
FLANGE PER CONTROPUNTA / Flange for live center

SERIE / Series	DIMENSIONI / Dimensions (mm)				CODICE / Code
	øA	øB	øC	D	
FPI/45/98	45	98	35	55	RPW000.001.05
FPI/95/148	95	148	35	55	RPW000.002.05
FPI/145/198	145	198	35	55	RPW000.003.05
FPI/195/248	195	248	35	55	RPW000.004.05
FPI/245/298	245	298	35	55	RPW000.005.05

øB a richiesta fino a ø1000 /
 øB on request till ø1000



GHIERA DI ESTRAZIONE PER SERIE POWER / SP-G / MA Ring nut for SERIES POWER / SP-G / MA



CONO MORSE / Morse Taper	DIMENSIONI / Dimensions (mm)			SERIE / Series	CODICE / Code
	øA	øB	C		
3	75	60x1,5	22	GHP 60	RPW003.005.00
4	82	70x1,5	22	GHP 70	RPW004.005.00
5	105	90x1,5	20	GHP 90	RPW005.005.00
6	140	110x1,5	23	GHP 110	RPW006.005.00

Grafico carico assiale AM SERIES AM assial graph

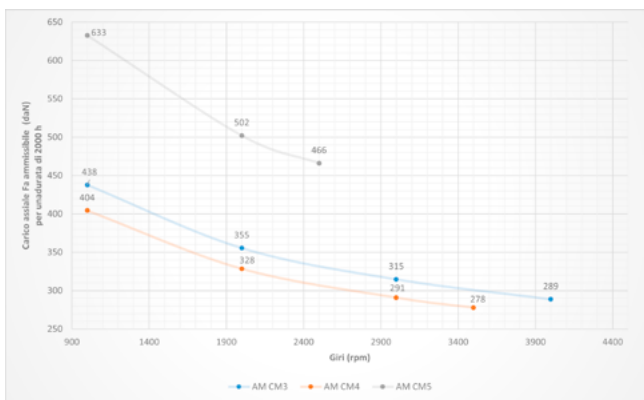


Grafico carico radiale AM SERIES AM radial graph

